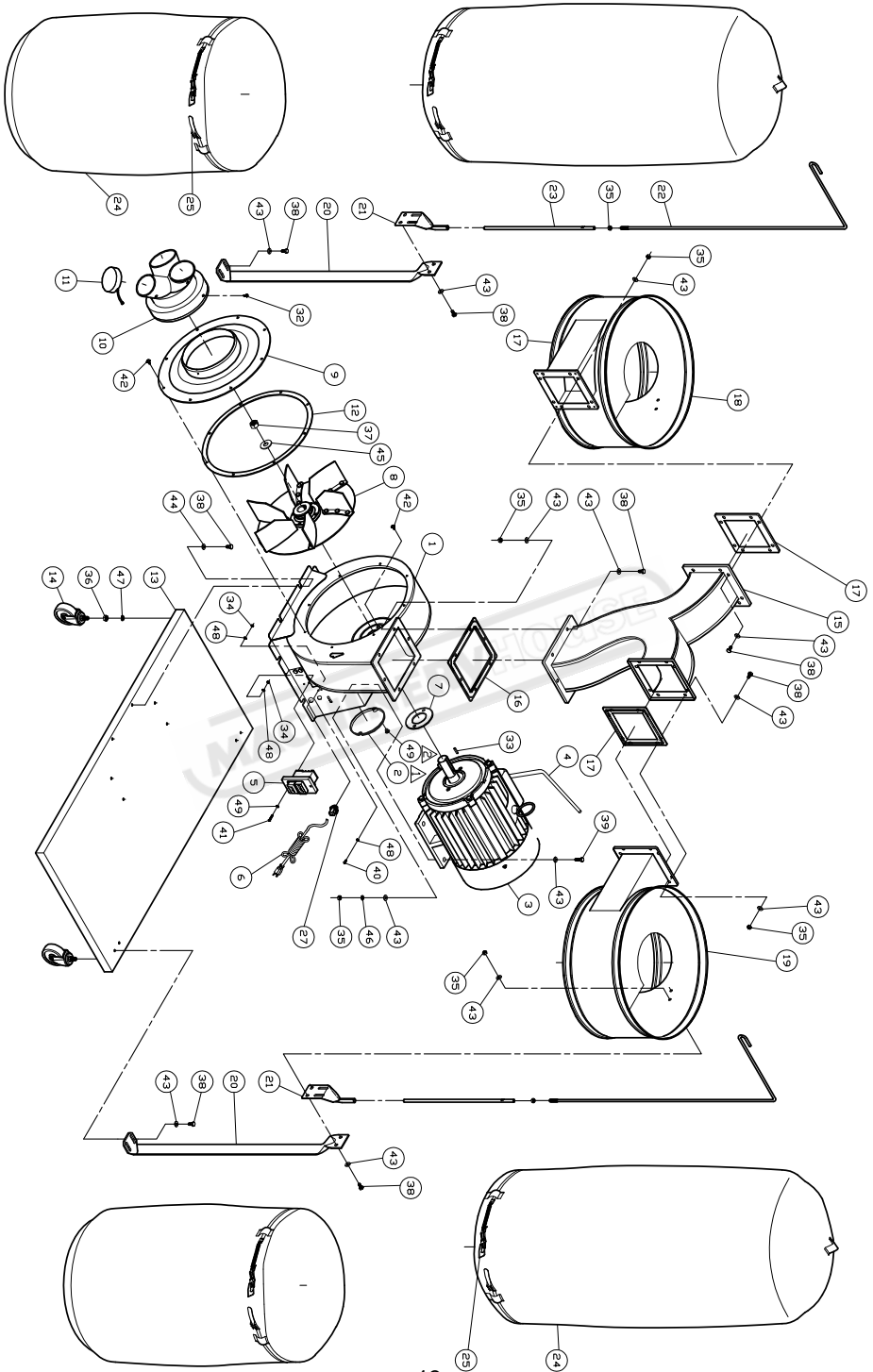


PARTS LIST				
KEY NO.	PARTS NO.	DESCRIPTION	SIZE	Q'TY
1	431018	IMPELLER HOUSING		1
2	431019	IMPELLER HOUSING BRACKET		1
3	431020	MOTOR BRACKET		1
4	459038	BRACKET CAP		1
5	MA431001	MOTOR	3HP	1
6	IM431001	MOTOR CORD	(OPTIONAL)	1
7	994542	SWITCH	(OPTIONAL)	1
8	IC431001	POWER CORD	(OPTIONAL)	1
9	420051	MOTOR PAD		1
10	AB431906	IMPELLER (ASM)	Ø14"	1
	431906	IMPELLER		1
	430007	BUSHING	Ø24	1
	SH089400	HEX HEAD BOLT	M8*16	4
	WS080000	SPRING WASHER	M8*16	4
11	431008	INLET COVER	Ø8"	1
12	431025	ADAPTER	3-Ø4"	1
13	420203	ADAPTER CAP		2
14	431034	INLET COVER PACKING		1
15	430028	BASE		1
16	402036	PIVOTING CASTER		4
17	430004	CONNECTOR		1
18	430035	RUBBER PACKING		1
19	430036	RUBBER PACKING		2
20	430002	LEFT HOUSING		1
21	430030	RIGHT HOUSING		1
22	402004	SUPPORT BAR		2
23	523011	HANGER BRACKET		2
24	430053	UPPER HANGER		2
25	424008	LOWER HANGER		2
26	430055	FILTER BAG		2
27	AB430005	RETAINER STRAP		4

PARTS LIST				
KEY NO.	PARTS NO.	DESCRIPTION	SIZE	Q'TY
	430005A	STEEL STRAP		1
	430005B	BACKLER HOLER		1
	430005C	BACKLER		1
	430005D	HOOKLY HOLDER		1
	430005E	HOOKLY		1
	VF050035	RIVET	Ø5*3.5L	2
	VF050280	RIVET	Ø5*28	1
28	402018	COLLECTION BAG		2
29	998654	STRAIN RELIEF		2
30	SG080400	HEX HEAD BOLT W/FLANGE	M8*20	40
31	NF081300	HEX FLANGE NUT	M8	30
32	SF550400	PAN HEAD BOLT W/FLANGE	3/16"*1/2"	1
33	KS070720	KEY	7*7*20	1
34	NH550800	NUT	3/16"	1
35	NH081300	NUT	M8	6
36	NH581400	NUT	3/8"*16UNC	4
37	NH602300	NUT	5/8"*18UNF	1
38	SH089300	HEX HEAD BOLT	M8*12	12
41	SP550400	PAN HEAD BOLT	3/16"*1/2"	1
42	SP551000	PAN HEAD BOLT	3/16"*1"	2
13	SF069300	PAN HEAD FLANGE BOLT	M6*12	10
44	WF081818	FLAT WASHER	M8*Ø18	8
46	WF164030	FLAT WASHER	M16*Ø40	1
47	WS080000	SPRING WASHER	M8	14
48	WS100000	SPRING WASHER	M10	4
49	WE050000	STAR WASHER (EXT.)	M5	4
50	ST049200	TAPPING SCREW	M4*8	2



PARTS LIST				
KEY NO.	PARTS NO.	DESCRIPTION	SIZE	Q'TY
1	AB431916	IMPELLER HOUSING		1
	431916	MOTOR BRACKET		1
	431917	MOTOR BRACKET		1
	431918	IMPELLER HOUSING		1
	431019	IMPEELER HOUSING BRACKET		1
2	459038	BRACKET CAP		1
3	MA435001	MOTOR	5HP 3PH	1
4	IM435001	MOTOR CORD	(OPTIONAL)	1
5	994543	SWITCH	(OPTIONAL)	1
6	IC435001	POWER CORD	(OPTIONAL)	1
7	420051	MOTOR PAD		1
8	AB431006	IMPELLER (ASM.)	Ø14"	1
	431006	IMPELLER		1
	430007	BUSHING	Ø24	1
	SH089400	HEX HEAD BOLT	M8*16	4
	WS080000	SPRING WASHER	M8	4
9	431008	INLET COVER	Ø8"	1
10	431025	ADAPTER	3-Ø4"	1
11	420203	ADAPTER CAP		2
12	431034	INLET COVER PACKING		1
13	430028	BASE		1
14	402036	PIVOTING CASTER		4
15	430004	CONNECTOR		1
16	430035	RUBBER PACKING		1
17	430036	RUBBER PACKING		2
18	430002	LEFT HOUSING		1
19	430030	RIGHT HOUSING		1
20	402004	SUPPORT BAR		2
21	523011	HANGER BACKET		2
22	430053	UPPER HANGER		2
23	424008	LOWER HANGER		2

PARTS LIST				
KEY NO.	PARTS NO.	DESCRIPTION	SIZE	Q'TY
24	430001	FILTER BAG		2
25	AB430005	RETAINER STRAP		4
	430005A	STEEL STRAP		1
	430005B	BACKLER HOLER		1
	430005C	BACKLER		1
	430005D	HOOKLY HOLDER		1
	430005E	HOOKLY		1
	VF050035	RIVET	Ø5*3.5L	2
	VF050280	RIVET	Ø5*28	1
26	402011	COLLECTION BAG		2
27	998654	STRAIN RELIEF		2
32	SF550400	PAN HEAD BOLT W/FLANGE	3/16"*1/2"	1
33	KS070720	KEY	7*7*20	1
34	NH550800	NUT	3/16"	1
35	NH081300	NUT	M8	32
36	NH581400	NUT	3/8"*16UNC	4
37	NH602300	NUT	5/8"*18UNF	1
38	SH080400	HEX HEAD BOLT	M8*20	36
39	SH080500	HEX HEAD BOLT	M8*25	4
40	SP550400	PAN HEAD BOLT	3/16"*1/2"	1
41	SP551000	PAN HEAD BOLT	3/16"*1"	2
42	SH069300	PAN HEAD BOLT W/FLANGE	M6*12	10
43	WF081818	FLAT WASHER	M8*Ø18	64
44	WF081818	FLAT WASHER	M8*Ø18	6
45	WF164030	FLAT WASHER	M8*Ø40	1
46	WS080000	SPRING WASHER	M8	4
47	WS100000	SPRING WASHER	M10	4
48	WE050000	STAR WASHER (EXT.)	M8	4
49	ST049200	TAPPING SCREW	M4*8	2